

NON-FR Fabric (RU-88X-6)

Strength & Durability

The fabric is a heavyweight fabric constructed of two parts, the scrim and 4 mil coatings. The scrim, which is the woven part of the material, is constructed of individual tapes. The unique composition of the tapes and how they are woven together gives the fabric its tremendous rip, tear and puncture strength. The specialized 4 mil coatings provide a more uniform and thicker protection layer for the scrim, increasing ultraviolet protection. The thicker coatings are more resistant to abrasion damage during both fabrication and installation of the cover. The NON-FR fabric comes with a 16-year pro rata warranty.

Safe & Environmentally Friendly

No toxic chemicals are used in the production of Fabric. All scraps and used covers are 100 percent recyclable.

Bright Atmosphere

NON-FR fabric covers provide an exceptionally bright and pleasant interior atmosphere. Natural light penetrates the fabric while the unique composition of the tapes ensures it remains pliable and resistant to ultraviolet damage. The fabric reduces the conduction of heat and cold, ensuring a building that is warmer in the winter and cooler in the summer. The fabric is available in a variety of attractive colors, all featuring a bright white underside that further enhances the interior brightness.

Fabric Specifications

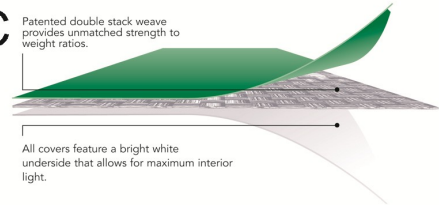
Weave	16 x 16 psi woven clear HDPE scrim	
Coating Thickness:	4.0 mils average each side (94 g/m ²)	
Coating Composition:	Modified LDPE coating with UV protection	
Weight:	12.5 oz/yd ² (373 g/m ²) +/- 5%	
Thickness:	23 mils (0.635mm)	ASTM D5199
Hydrostatic Resistance Method:	171 psi (1180 kPa)	ASTM D751A
Grab Tensile:	Warp: 340 lbs. (1511 N)	ASTM D5034
	Weft: 340 lbs. (1511 N)	ASTM D5034
Strip Tensile:	Warp: 250 lbs. (1112 N)	ASTM D5035
	Weft: 250 lbs. (1112 N)	ASTM D5035
Tongue Tear:	Warp: 115 lbs. (511 N)	ASTM D2261
	Weft: 115 lbs. (511 N)	ASTM D2261
Mullen Burst:	675 psi (4658 kPa)	ASTM D3786
Cold Crack:	Minus 60° C	ASTM D2136

Fabric Fire Ratings

Test / Standard	Flame Spread	Smoke Developed	Char Length
ASTM E84	FS10	SD 58	6.5
CAN/ULC 5102.2 – M88	FS15	SD 125	6.5

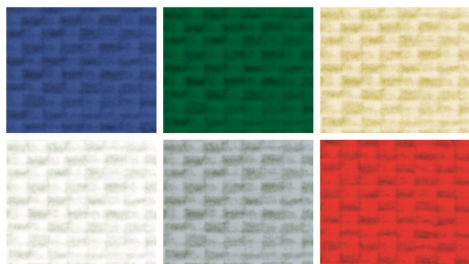
NON-FR FABRIC

Patented double stack weave provides unmatched strength to weight ratios.



All covers feature a bright white underside that allows for maximum interior light.

Fabric Colours



Colors may not be exactly as shown here. Contact your local BRITESPAN Dealer for actual fabric samples.

BRITESPAN™
BUILDING SYSTEMS INC

1-800-407-5846